



# SPECIFICATIONS AND OPTIONS

Product	SCHROTH AirLite®	
	Compact steel snap hooks B 139	Special triangle snap hooks BK B 16
Specification	Guaranteed weight less than 230 g per unit, +/- 5 g tolerance	Guaranteed weight less than 240 g per unit, +/- 5 g tolerance
	Shackles* required	Delivered including SCHROTH special bushings, shackles no longer required
Belt Weight (Standard belt length)	< 230 g	< 240 g
Seat Connection / End Fittings	Compact steel snap hooks B 139 delivery without shackles*	Special triangle snap hooks BK B 16 with bushings
		
System Weight (Belt configuration above + shackle)	30 g per shackle* = 60 g + Belt weight < 230 g	Belt weight < 240 g
	Total system weight: < 290 g	Total system weight: < 240 g
Certification	TSO / ETSO-C22g	
Rated Strength	13.3 kN (3.000 lbs)	
Available Opening Angles	30° / 90°	
Available Accessories	Extension Belt, Demo Belt and Infant / Utility Belt	

\* Conventional shackles are not included in the scope of delivery.

## Sales and Service

EUROPE, EMEA AND ASIA  
SCHROTH Safety Products GmbH  
Im Ohl 14  
D-59757 Arnsberg  
Phone +49 29 32-97 42 0  
Fax +49 29 32-97 42 42  
aerospace@eu.schroth.com  
Cage Code: C1624

AMERICAS  
SCHROTH Safety Products LLC  
5320 NW 35<sup>th</sup> Avenue  
Fort Lauderdale  
Florida 33309  
Phone +1 954-784 3178  
Fax +1 954-784 3179  
rfq@us.schroth.com  
Cage Code: 1EAW9

CHINA  
Headquarter China  
Room 606, 6f, Tower C  
Lane 2889 Jinke Road  
Pudong New Area Shanghai  
Phone +86 152 167 11070  
schroth-china@cn.schroth.com

## Company Approvals

GERMANY  
· EASA Part 21 Section A Subpart G  
Approval No. DE.21G.0114  
· EASA Part 145  
Approval No. DE.145.0240  
· APDOA Authorization  
EASA AP210  
· UK CAA Part 145  
Approval No. UK.145.01697  
· DIN EN ISO 9001  
· EN 9100  
· ISO 14001

USA  
· FAR Part 21  
Approval No. PT 1662-CE  
· AS 9100

## Disclaimer

This document gives a general description of the product(s) or services and except where expressly provided otherwise it shall not form part of any contract. From time to time, changes may be made to the products or the conditions of supply. SCHROTH Safety Products GmbH reserves the right to change product specifications without prior notice.

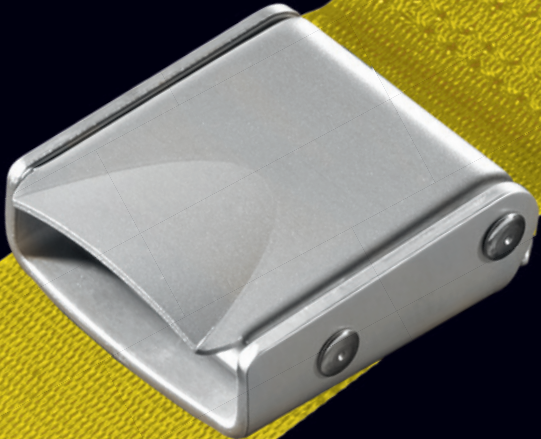
SCHROTH Safety Products GmbH ©  
March 2025

[www.schroth.com](http://www.schroth.com)

SCHROTH®

# SAFETY THROUGH TECHNOLOGY

## AIRLITE – PASSENGER LAP BELT





# AIRLITE – PASSENGER LAP BELT

The SCHROTH AirLite® passenger lap belt is the signature product of light-weight and comfortable SCHROTH commercial passenger restraints. Its ultra-low weight lift lever design allows commercial airlines to substantially reduce the total cost of ownership for their passenger lap belts and to realize significant fuel savings.

SCHROTH standard passenger lap belts are in use with many large and small airlines worldwide. A variety of lift lever buckle designs and more than 160 webbing colors allow for customized options which add value to both airlines and passengers.

## PRODUCT HIGHLIGHTS

- Up to 25% lighter in weight than a conventional passenger lap belt
- Reduced weight of SCHROTH AirLite® allows airlines to save on fuel costs, reduce CO<sub>2</sub> emissions and reduce cost of ownership
- High strength aluminum and steel components
- Rated strength: 13.3 kN (3,000 lbs)
- Meets TSO / ETSO-C22g and dynamic 16 g requirements

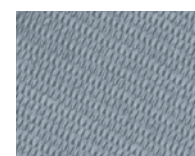
## COMPONENTS

### Webbing

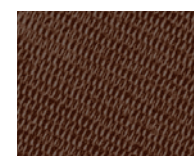
More than 160 webbing colors



asphalt



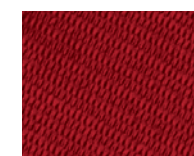
light blue



brown



puerta vallarta



dragon red



slate blue

### Plating and engraving

The illustrations show our most popular plating options. Hundreds of webbing and plating options are available, including custom engraving. Call us for samples to support your individual style.



polished chrome



satin nickel



polished gold 24K



satin gold 24K



engraved



engraved

### Buckle

- Ergonomic low-profile buckle design with hard-anodized finish
- Lift Lever Buckle with rotating load bar (clean lines and smooth finish to buckle sides)
- Design and flat rivets on sides for smoother look
- Low noise release mechanism – no squealing
- 90° and 30° buckle opening angles available (release actuation)

### End fitting

- Compact snap hook with protected spring in keeper clip
- Weight saving alternative: SCHROTH AirLite® combined with special triangle snap hooks incl. bushings (BK B 16) save 50 g weight
- Additional styles of end fittings available

### Customization

- Available options include logo laser engraving and colored laser engraving
- Retrofit possible on existing seat attachment points

### Accessories

The SCHROTH AirLite® passenger lap belt system is available with a range of matching accessories such as extension belts, infant / utility belts and Y-Belts. These SCHROTH AirLite® accessories come with the same light-weight design as the standard SCHROTH AirLite® passenger lap belt.



Extension belts, Demo belts



Infant / Utility belts



Y-belts