

# COMMERCIAL AVIATION

CREW AND PASSENGER SEAT BELTS



# COMMERCIAL AVIATION

SCHROTH is a long-time supplier of passenger seat belts to numerous airlines and airframe manufacturers worldwide. We supply cabin attendant restraints for the entire Airbus fleet as well as 16 g passenger lap belts to many of the world's leading commercial airlines.

SCHROTH has been the first manufacturer to offer and certify a push button lap belt for commercial airline use, thus providing a highly innovative and extremely easy-to-use lap belt solution.

SCHROTH passenger belts are available in more than 160 different webbing colors to match any aircraft interior design.

SCHROTH offers a variety of passenger restraints that specifically meet exclusive requirements of first and business class passengers. Buckle housings are available with a great variety of attractive surfaces that will make passengers immediately feel highly esteemed by their preferred airline.

# CREW AVIATION

## Model 18

**Airbus A330 / A340 / A350 / A380**

The use of special light-weight components make these restraints a preferred choice to airlines. Dual reel function, mini rotary buckle design and easy-to-operate length adjusters provide the highest comfort and safety for your cabin crew.

### A330 / 340

AMI Seat Model 2157 + 2158  
PN 18-0100KOKZN-xx

### A350 / A380

PN 18-0201D1DYE-xx  
PN 18-0501D1DYE-xx

xx = Indicates webbing color  
Certified according to ETSO(JTSO)/TSO-C114



## Model 1-11

**Airbus A330 / A340**

The well known and patented SCHROTH RFR™ rotary buckle and the single inertia reel function ensure extremely easy and comfortable handling of these restraints. Load limiting stitching on the shoulder belts and mechanical load limiters on the pelvic restraints offer optimum safety for the entire cabin crew.

### AMI Seat Model 2057 + 2058

PN 1-11-0302xx (RH)  
PN 1-11-0352xx (LH)

### AMI Seat Model 2071 + 2072

PN 1-11-0402xx (RH)  
PN 1-11-0452xx (LH)

xx = Indicates webbing color  
Certified according to ETSO(JTSO)/TSO-C114



## Model 1-08

**Airbus A319 / A320 / A321**

This well proven and reliable cabin crew restraint for Airbus single aisle aircraft features the patented SCHROTH RFR™ rotary buckle as well as a dual reel function, offering the highest level of comfort and safety for the flight crew.

### Sigma Single Seat

PN 1-08-0102xx (RH)  
PN 1-08-0152xx (LH)

### Sigma Bench Seat

PN 1-08-0602xx (RH)  
PN 1-08-0652xx (LH)

xx = Indicates webbing color  
Certified according to ETSO(JTSO)/TSO-C114

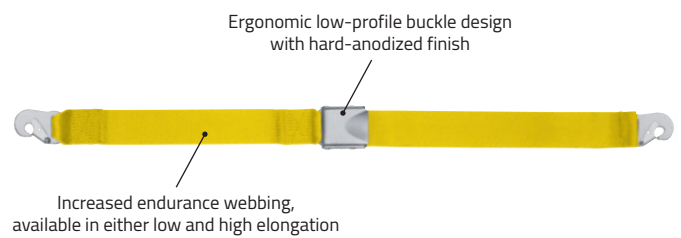
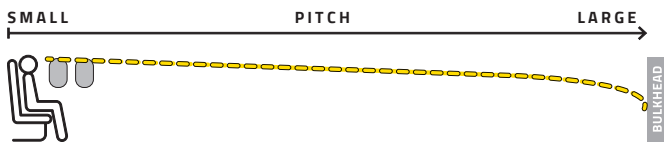




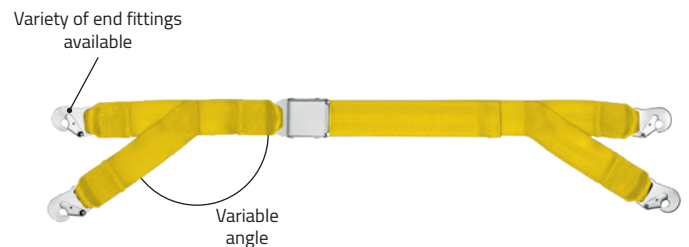
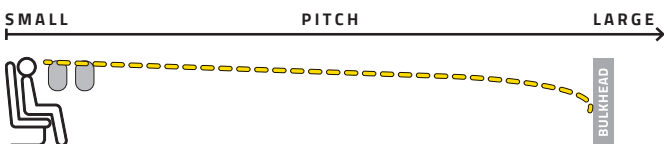
## PASSENGER AVIATION

More than 80 years of experience have made SCHROTH an unparalleled provider for some of the most advanced and innovative restraint solutions available today for any kind of aircraft. Our team takes special pride in the goal to protect human lives in any means of air transportation. We apply state-of-the-art design technologies, highly advanced research and development processes as well as sophisticated quality monitoring programs. Solutions for commercial aerospace include the entire product portfolio, ranging from ultra-light-weight SCHROTH AirLite® passenger lap belts to active pretensioning restraint systems and airbag applications. The SCHROTH passenger restraint systems are available with a range of matching accessories such as extension and infant/utility belts.

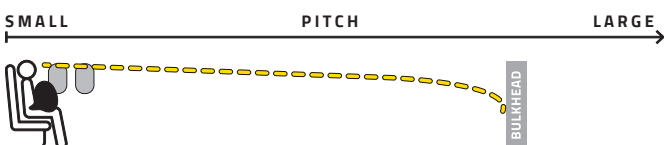
### 2-Point Lap Belt Optional Feature: Antimicrobial Protection



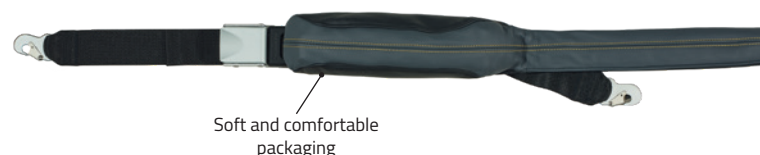
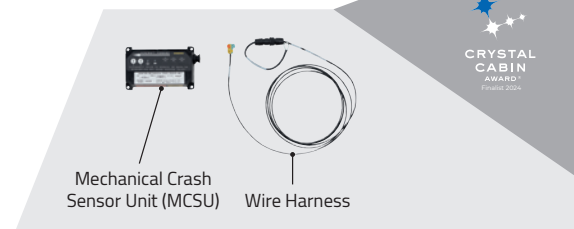
### Y-Belt



### 2-Point Lap Belt with Airbag

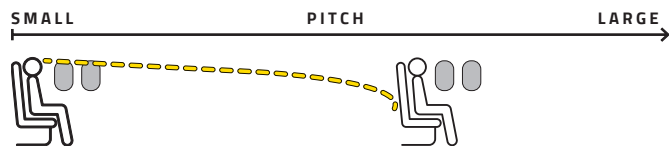


Customization of leather cover possible.

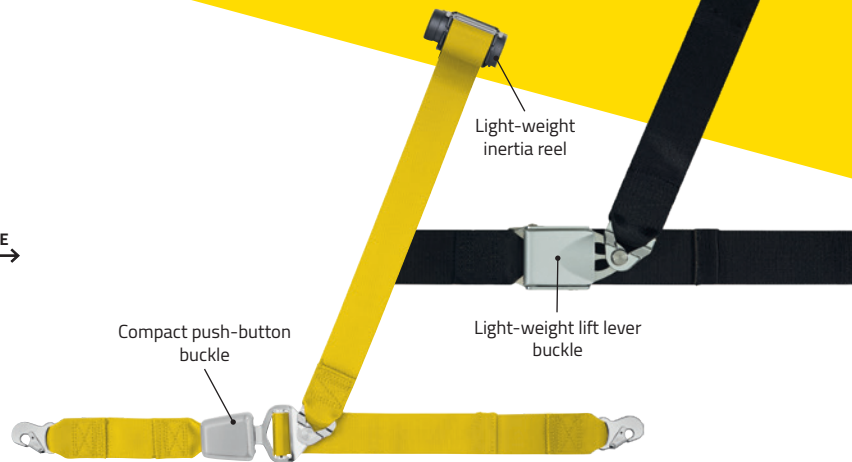


# PASSENGER AVIATION

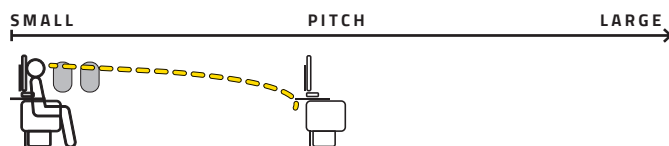
## 3-Point Restraint with Inertia Reel



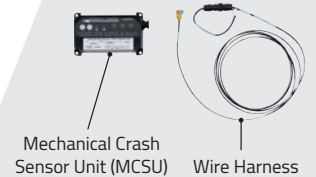
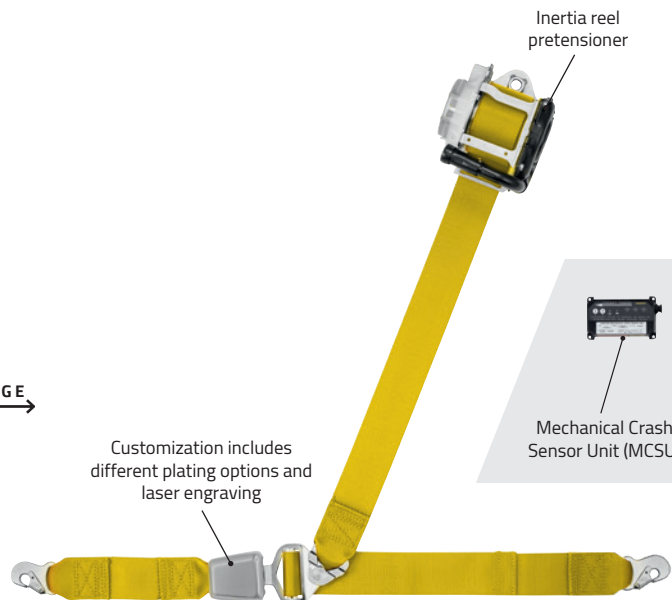
Light-weight lift lever and push button buckle options available.



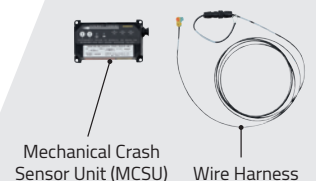
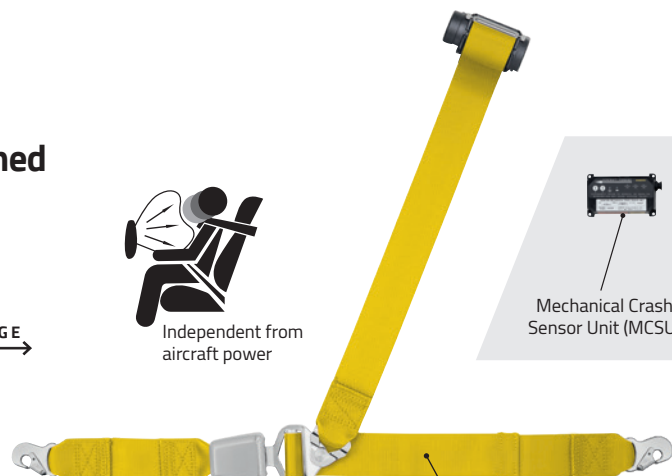
## 3-Point Restraint with Inertia Reel Pretensioner



Customization includes different plating options and laser engraving



## 3-Point Restraint with Inertia Reel combined with Structure-Mounted Airbag



# PLATING & WEBBING

SCHROTH uses engineering polyester webbing for its restraint systems. Polyester has a much better energy conversion capability than common polyamide (Nylon) webbing which is used by other harness belt manufacturers. Polyester has superior resistance against UV rays and chemicals such as solvents and acids. The SCHROTH mono file shot thread webbing technology prevents the straps from tangling and provides optimum load distribution during crash conditions because it stays flat due to its "memory effect".

The illustrations show our most popular webbing colors and plating options. Virtually hundreds of combinations are available. We can also supply requested custom dyed webbing material. Please ask us to match your individual style. Samples are available upon request.





# Plating and engraving

The illustrations show our most popular plating options. Hundreds of webbing and plating options are available, including custom engraving. Call us for samples to support your individual style.



polished chrome



satin smoke nickel



polished gold 24K



polished rose gold

## Polyester webbing

More than 160 webbing colors

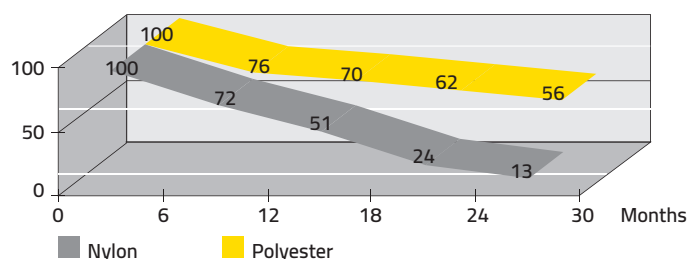


Figure 1: Remaining strength in percent over a 2 year period.

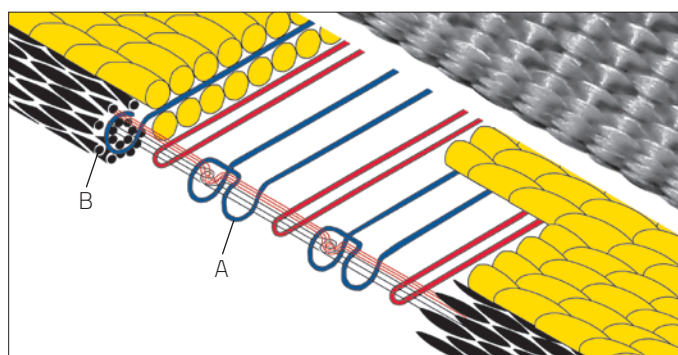
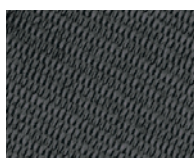


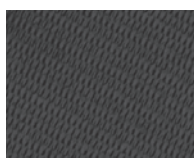
Figure 2: A points to the woven in mono filaments responsible for the "memory effect". B points to the round edges for additional comfort.



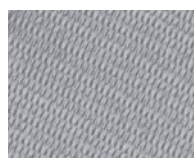
black



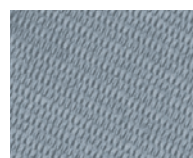
asphalt



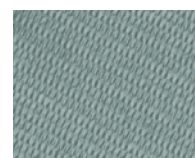
dark grey



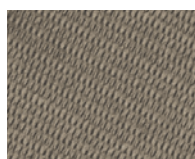
silver



light blue



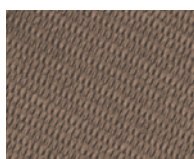
lunar



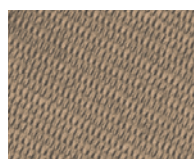
pepperdust



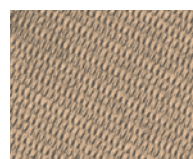
brown



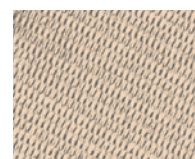
pampas



tan



shark grey



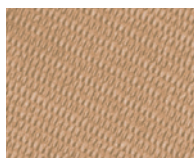
caribbean sand



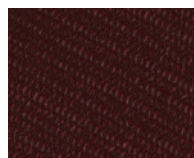
puerta vallarta



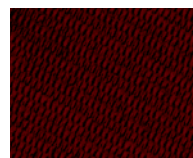
beige



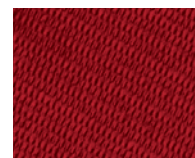
champagne



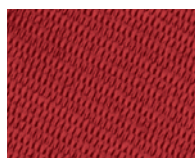
port



burgundy



dragon red



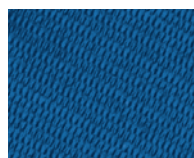
dark red



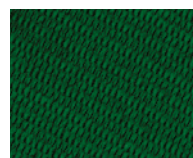
midnight blue



blue



azure



dark green



yellow

True colors may deviate from illustration.

## Sales and Service

EUROPE, EMEA AND ASIA  
SCHROTH Safety Products GmbH  
Im Ohl 14  
D-59757 Arnsberg  
Phone +49 29 32-97 42 0  
Fax +49 29 32-97 42 42  
aerospace@eu.schroth.com  
Cage Code: C1624

AMERICAS  
SCHROTH Safety Products LLC  
5320 NW 35<sup>th</sup> Avenue  
Fort Lauderdale  
Florida 33309  
Phone +1 954-784 3178  
Fax +1 954-784 3179  
rfq@us.schroth.com  
Cage Code: 1EAW9

CHINA  
Headquarter China  
Room 606, 6f, Tower C  
Lane 2889 Jinke Road  
Pudong New Area Shanghai  
Phone +86 152 167 11070  
schroth-china@cn.schroth.com

## Company Approvals

GERMANY  
· EASA Part 21 Section A Subpart G  
Approval No. DE.21G.0114  
· EASA Part 145  
Approval No. DE.145.0240  
· APDOA Authorization  
EASA AP210  
· UK CAA Part 145  
Approval No. UK.145.01697  
· DIN EN ISO 9001  
· EN 9100  
· ISO 14001

USA  
· FAR Part 21  
Approval No. PT 1662-CE  
· AS 9100

## Disclaimer

This document gives a general description of the product(s) or services and except where expressly provided otherwise it shall not form part of any contract. From time to time, changes may be made to the products or the conditions of supply. SCHROTH Safety Products GmbH reserves the right to change product specifications without prior notice.

SCHROTH Safety Products GmbH®  
March 2025

**[www.schroth.com](http://www.schroth.com)**