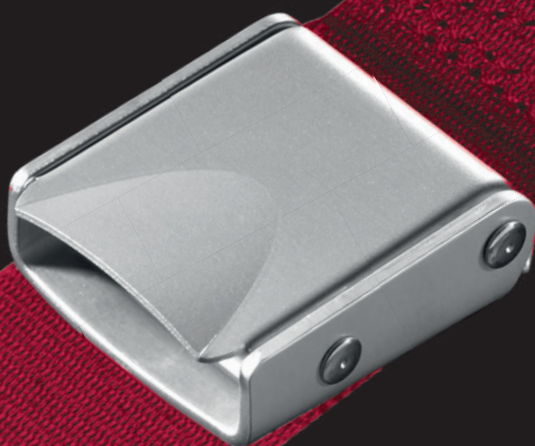


SCHIRNTH®

SAFETY THROUGH TECHNOLOGY

AIRLITE – PASSENGER LAP BELT



AIRLITE – PASSENGER LAP BELT

The SCHROTH AirLite® passenger lap belt is the signature product of light-weight and comfortable SCHROTH commercial passenger restraints. Its ultra-low weight lift lever design allows commercial airlines to substantially reduce the total cost of ownership for their passenger lap belts and to realize significant fuel savings.

SCHROTH standard passenger lap belts are in use with many large and small airlines worldwide. A variety of lift lever buckle designs and more than 160 webbing colors allow for customized options which add value to both airlines and passengers.

PRODUCT HIGHLIGHTS

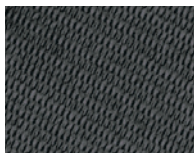
- Up to 25% lighter in weight than a conventional passenger lap belt
- Reduced weight of SCHROTH AirLite® allows airlines to save on fuel costs, reduce CO2 emissions and reduce cost of ownership
- High strength aluminum and steel components
- Rated strength: 13.3 kN (3,000 lbs)
- Meets TSO / ETSO-C22g and dynamic 16 g requirements



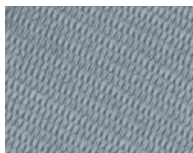
COMPONENTS

Webbing

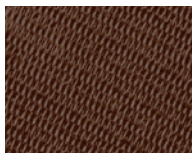
More than 160 webbing colors



asphalt



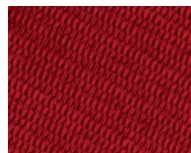
light blue



brown



puerta vallarta



dragon red



slate blue

Plating and engraving

More than 60 options

The illustrations show our most popular plating options. Hundreds of webbing and plating options are available, including custom engraving. Call us for samples to support your individual style.



polished chrome



satin nickel



polished gold 24K



satin gold 24K



engraved



engraved

Buckle

- Ergonomic low-profile buckle design with hard-anodized finish
- Lift Lever Buckle with rotating load bar (clean lines and smooth finish to buckle sides)
- Design and flat rivets on sides for smoother look
- Low noise release mechanism – no squealing
- 90° and 30° buckle opening angles available (release actuation)

End fitting

- Compact hook with protected spring in keeper clip
- NEW SYSTEM: SCHROTH AirLite® combined with special triangle shaped (steel) snap hooks incl. bushings (BK B 16) save 50 g weight
- Additional styles of end fittings available

Customization

- Available options include logo laser engraving and colored laser engraving
- Retrofit possible on existing seat attachment points

Accessories

The SCHROTH AirLite® passenger lap belt system is available with a range of matching accessories such as extension belts, infant / utility belts and Y-Belts. These SCHROTH AirLite® accessories come with the same light-weight design as the standard SCHROTH AirLite® passenger lap belt.



Extension belts, Demo belts







Infant/Utility belts



Y-belts

SPECIFICATIONS AND OPTIONS

Product	SCHROTH AirLite®			
	NEW! Compact steel snap hooks B 139	Aluminium snap hooks B 117	NEW! SYSTEM COMBINATION! Special triangle shaped snap hooks (steel) BK B 16	Steel snap hooks B 22
Specification	Guaranteed weight less than 230 g per unit, +/- 5 g tolerance Shackles* required	Guaranteed weight less than 235 g per unit, +/- 5 g tolerance Shackles* required	Guaranteed weight less than 240 g per unit, +/- 5 g tolerance Delivered including SCHROTH special bushings, shackles no longer required	Guaranteed weight less than 255 g per unit, +/- 5 g tolerance Shackles* required
Belt Weight (Standard belt length)	< 230 g LESS WEIGHT, LESS COST	< 235 g	< 240 g	< 255 g
Seat Connection / End Fittings	Compact steel snap hooks B 139 delivery without shackles* 	Aluminium snap hooks B 117 delivery without shackles* 	Special triangle shaped snap hooks steel BK B 16 with bushings  SPECIAL TRIANGLE SHAPED SNAP HOOKS INCL. BUSHING!	Steel snap hooks B 22 delivery excl. shackles* 
System Weight (belt configuration above + shackle)	30 g per shackle* = 60 g + Belt weight < 230 g Total system weight: < 290 g	30 g per shackle* = 60 g + Belt weight < 235 g Total system weight: < 295 g	Belt weight < 240 g Total system weight: < 240 g	30 g per shackle* = 60 g + Belt weight < 255 g Total system weight: < 315 g
Certification	TSO / ETSO-C22g			
Rated Strength	13.3 kN (3.000 lbs)			
Available Opening Angles	30° / 90°			
Available Accessories	Extension Belt, Demo Belt and Infant / Utility Belt			

* Conventional shackles are not included in the scope of delivery.

tip! New System! Using the SCHROTH AirLite® with the special triangle shaped snap hooks (steel) with bushings (BK B 16) saves 50 g weight.

Sales and Service

EUROPE, EMEA AND ASIA
SCHROTH Safety Products GmbH
Im Ohl 14
D-59757 Arnsberg
Phone +49 (0) 29 32-97 42 0
Fax +49 (0) 29 32-97 42 42
aerospace@eu.schroth.com
Cage Code: C1624

AMERICAS
SCHROTH Safety Products LLC
1371 SW 8th St., Unit #3
Pompano Beach, Florida 33069
Phone +1 954-784 3178
Fax +1 954-784 3179
rfq@us.schroth.com
Cage Code: 1EAW9

Company Approvals

GERMANY
· EASA Part 21 Section A Subpart G
Approval No. DE.21G.0114
· EASA Part 145 /
Approval No. DE.145.0240
· APDOA Authorization
EASA AP210
· DIN EN ISO 9001
· EN 9100

USA
· FAR Part 21 /
Approval No. PT 1662-CE
· AS 9100

Disclaimer

This document gives a general description of the product(s) or services and except where expressly provided otherwise it shall not form part of any contract. From time to time, changes may be made to the products or the conditions of supply. SCHROTH Safety Products GmbH reserves the right to change product specifications without prior notice.

SCHROTH Safety Products GmbH ©
March 2019

www.schroth.com